

# Fosroc® Proofex® Torchseal Pressure Seal Flashing



constructive solutions

## Aluminium strips for sealing and flashing the edge of waterproofing sheet membranes

### Uses

Proofex Torchseal Pressure Seal Flashing is used to seal and flash the edge of Torchseal torch applied bituminous membrane range of products and Proofex 3100 and Proofex 6100 self-adhesive sheet membranes.

The flashing strip is mechanically fixed, (with 150mm spacing between fixings), with the top edge sealed with a compatible sealant such as Nitoseal MB175 or Nitoseal MS400.

### Advantages

- Mechanically fixed through the membrane preventing the membrane from slumping
- Grooved in the centre of the strip for locating the drill

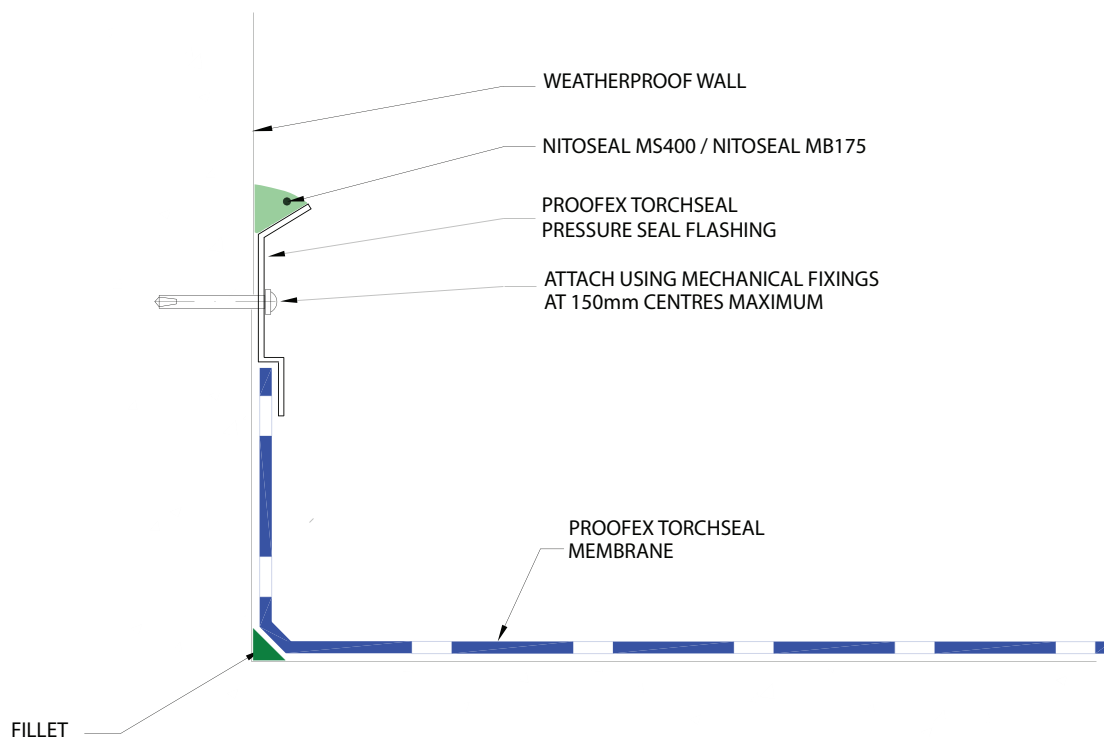
### Description

Extruded aluminium strips designed specifically for sealing and flashing the edge of torch applied sheet membranes and self adhesive bituminous sheet waterproofing membranes.

### Supply

**Proofex Torchseal Pressure Seal Flashing:** 3 metre lengths

**Material code:** FC007019-UNIT



### Important notice

Read the TDS carefully prior to use as application or performance data may change from time to time.

### Product disclaimer

This Technical Data Sheet (TDS) summarises our best knowledge of the product, including how to use and apply the product based on the information available at the time. You should read this TDS carefully and consider the information in the context of how the product will be used, including in conjunction with any other product and the type of surfaces to, and the manner in which, the product will be applied. Our responsibility for products sold is subject to our standard terms and conditions of sale. Parchem does not accept any liability either directly or indirectly for any losses suffered in connection with the use or application of the product whether or not in accordance with any advice, specification, recommendation or information given by it.