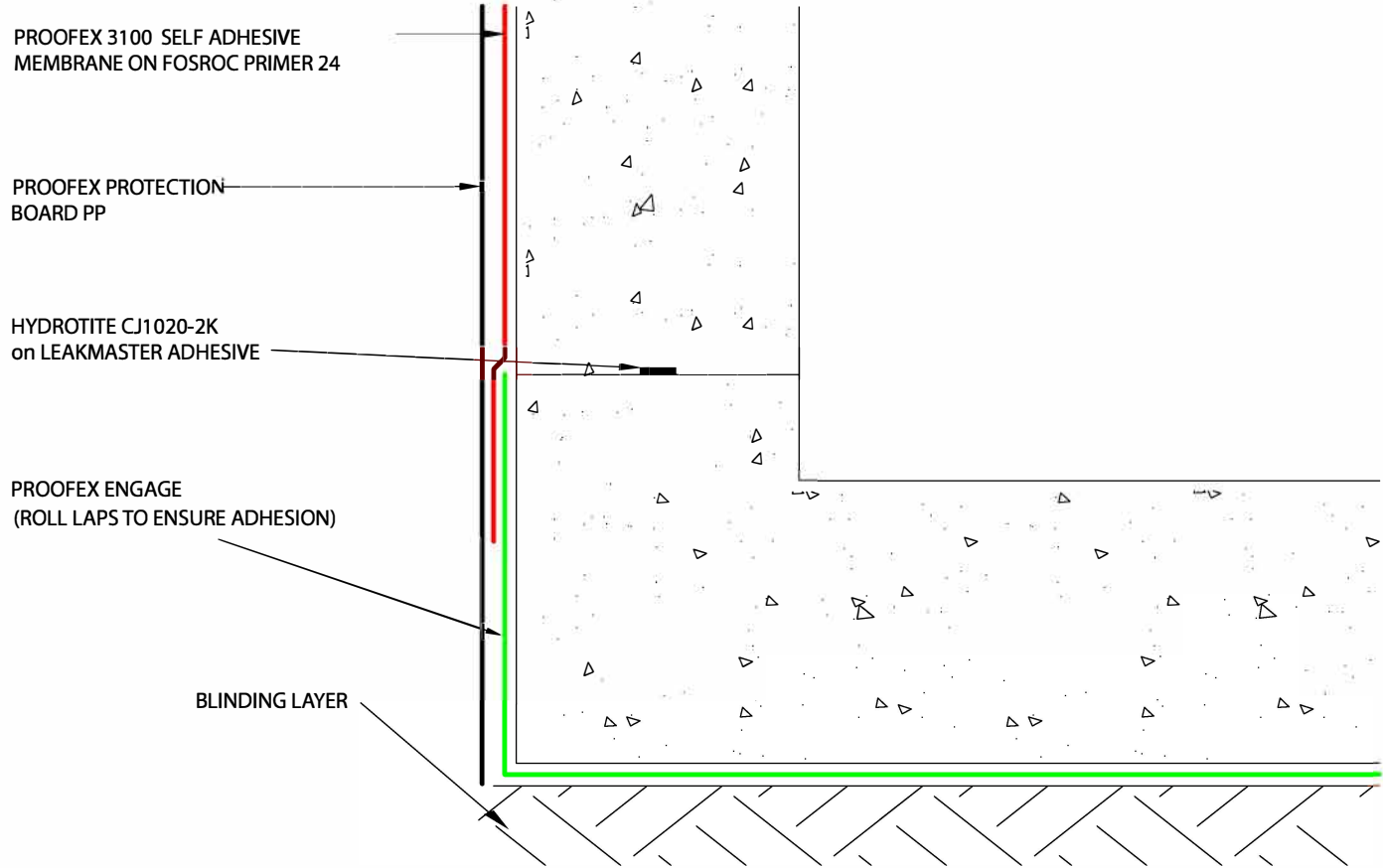


As suppliers of building and civil engineering products Parchem Construction Supplies Pty Ltd do not offer a design service. Information in this drawing is a suggestion only and must not be used for construction except as a signed off drawing by the specifier or contractor

C This drawing is the copyright of Fosroc Ltd. (modified by permission) and must not be reproduced in any part without prior written permission



PROOFEX 3100 SELF ADHESIVE MEMBRANE ON FOSROC PRIMER 24

PROOFEX PROTECTION BOARD PP

HYDROTITE CJ1020-2K on LEAKMASTER ADHESIVE

PROOFEX ENGAGE (ROLL LAPS TO ENSURE ADHESION)

BLINDING LAYER

PROOFEX ENGAGE / PROOFEX 3100 FLOOR TO WALL DETAIL

SCALE:- NTS

DRAWN BY:- AMC

DATE:- 4/1/01

LATEST AMENDMENT:- PJ

DATE:- 28/09/21

TSD/W-ESD03

ISSUE NUMBER 5



PARCHEM CONSTRUCTION SUPPLIES
1956 DANDENONG RD CLAYTON VIC 3168

www.fosroc.com.au

1800 812 86 4

Fosroc and the Fosroc logo, are the trade marks of Fosroc International Limited, used under licence